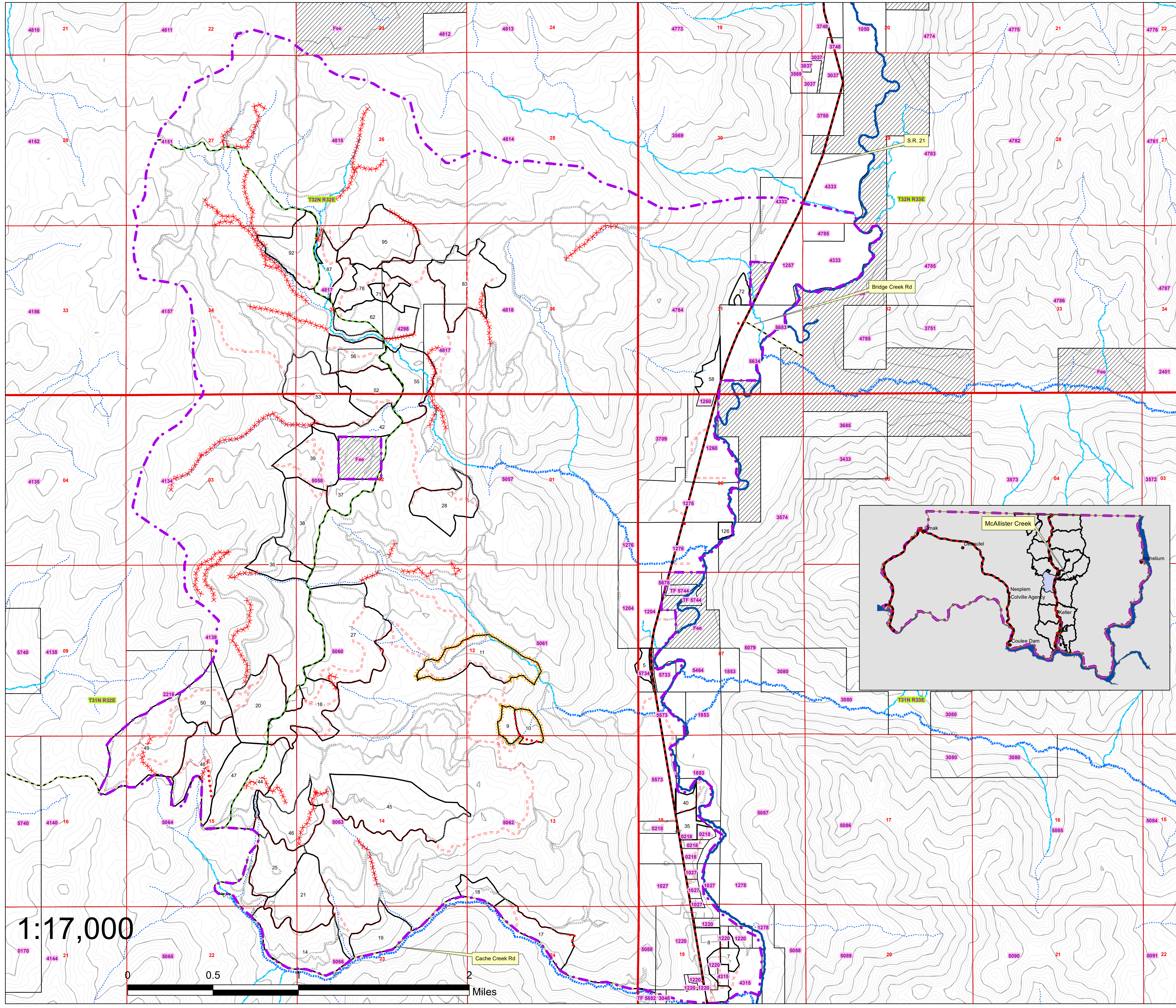


# McAllister Creek Logging Unit # 340

When Printed in ANIS D  
HAK 6-14-23



## McAllister Creek

- McAllister23\_Boundary** (Dashed purple line)
- Sections** (Red box with 25)
- Township** (Green box with 33)
- Blocks 23** (Black box with 126)

### Roads

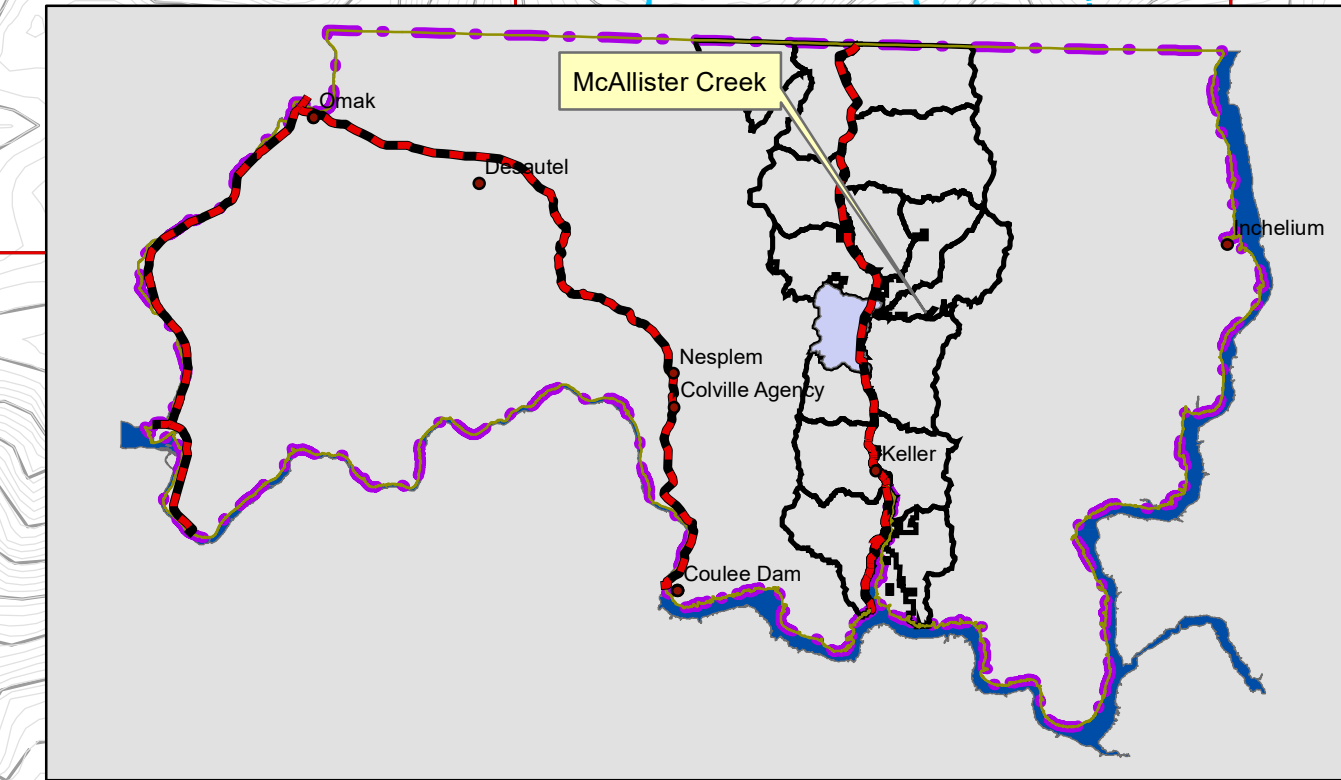
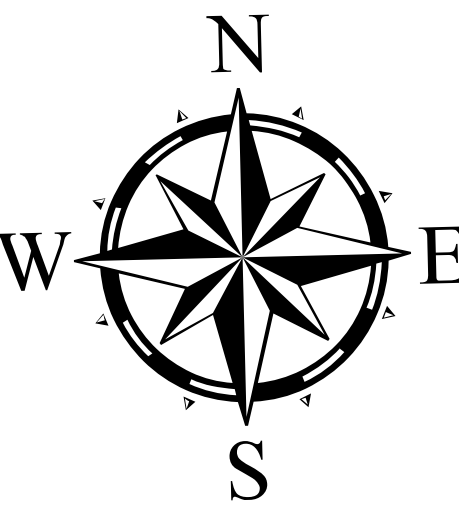
- Abandoned (Red 'X' pattern)
- BIA (Green dashed line)
- County (Yellow dashed line)
- Dozer Fire (Yellow dashed line with vertical bars)
- Inactive (Dotted line)
- Proposed (Red dotted line)
- Reconstruct (Red dashed line)
- State (Red solid line)

### Streams

- 1 (Blue solid line)
- 2 (Blue dashed line)
- 3 (Blue dotted line)
- 4 (Blue dash-dot line)

### Ownership

- T2222 Allotment Trust
- Fee Private Fee
- 3434 Public Domain Trust
- TF2121 Tribal Fee
- Tribal Reserve
- 4545 Tribal Trust
- 40 ft Contours
- 200 ft Contours



## McAllister Creek Activity "C" Table

Block	Acres	RX	Skid/ System	Seasonal Restrictions	SP/SD	Dozer Line (ft)
5	7.9	SW	T	NONE	MSP	
7	9.34	ST/OR	T	NONE	L/S	
8	27.79	ST/OR	T	NONE	L/S	
9	17.95	RRT	T	NONE	S	1,527
10	16.83	RRT	TETH	NONE	S	2,028
11	64.11	RRT	TETH	NONE	S	5,453
14	79.02	ST/OR	TETH	W/S	L/S	
16	56.48	ST/OR	T	NONE	L/S	
17	38.51	ST/OR	TETH	NONE	L/S	
18	16.83	ST/OR	TETH	NONE	L/S	
19	37.51	ST/OR	TETH	NONE	L/S	
20	64.94	ST/OR	T	W/S	L/S	
21	70.17	ST/OR	T	NONE	L/S	
25	46.48	ST/OR	T	NONE	L/S	
27	132.32	IC	T	NONE	L/S	
28	49.28	IC	T	NONE	L/S	
35	13.44	CT	T	NONE	L/S	
36	33.1	ST/OR	T	NONE	L/S	
37	23.48	ST/OR	T	NONE	L/S	
38	66.89	IC	T	NONE	L/S	
39	55.33	IC	TETH	NONE	L/S	
40	10.33	ST/OR	TETH	NONE	L/S	
42	27.52	ST/OR	TETH	NONE	L/S	
44	43.79	SW	T	NONE	MSP	
45	125.03	ST/OR	TETH	NONE	L/S	
46	52.05	ST/OR	TETH	NONE	L/S	
47	53.48	SW	TETH	NONE	MSP	
48	71.15	ST/OR	TETH	W/S	L/S	
49	116.31	ST/OR	T	NONE	L/S	
52	46.42	ST/OR	T	NONE	L/S	
53	78.05	ST/OR	T	NONE	L/S	
55	53.84	ST/OR	T	NONE	L/S	
56	39.07	ST/OR	T	NONE	L/S	
58	27.47	SW	T	NONE	MSP	
62	52.19	ST/OR	T	NONE	L/S	
71	6	ST/OR	T	NONE	L/S	
72	13.51	SW	T	W/S	MSP	
78	31.87	ST/OR	T	NONE	L/S	
83	73.97	ST/OR	T	NONE	L/S	
87	25.65	ST/OR	T	NONE	L/S	
92	56.24	IC	T	NONE	L/S	
95	69.64	IC	T	NONE	L/S	
126	5.61	ST/OR	T	NONE	L/S	
<b>TOTAL</b>	<b>2006.9</b>					<b>9,008</b>

### Slash Disposal and Seasonal Restrictions

- MSP** = Mechanical Slash Pile
- L/S** = Lop & Scatter
- S** = Slashing
- W/S** = Winter/ 2" Frost/ 24" snow or Summer
- SP/SD** = Site Prep/Slash Disposal

### Logging Systems

- TETH** = TETHER 647.7 ac.
- T** = TRACTOR 1359.2 ac.
- Dozerline** 9,008 ft.

### Prescription

- ST/OR** = Seed Tree / Over Story Removal 1318.71
- RRT** = Reserve Tree Cut 98.89
- SW** = Shelter Wood Cut 146.15
- CT** = Commercial Thin 13.44
- IC** = Improvement Cut 429.7

Total Acres = **2006.89**

1:17,000

